

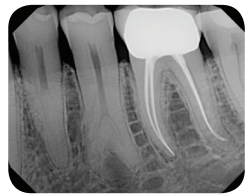
## Focus on Confidence.

From remarkable image quality and award-winning hardware to dedicated training and knowledgeable support, DEXIS strives to boost your confidence in the systems and images you use daily to diagnose, educate, and treat.

# DEXcam™ 4HD

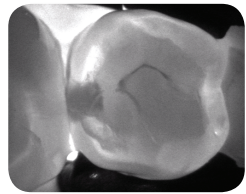
## High Definition Intra-oral Video Camera

*DEXIS provides you with a comprehensive visual narrative of the patient's oral health by offering three distinct imaging modalities.*



### DEXIS™ Platinum Digital X-rays

The award-winning DEXIS Platinum Digital X-ray System<sup>1</sup> is the easiest to use, the most comfortable for the patient, and offers the best and most consistent images — even at low doses.<sup>2</sup>



### DEXIS™ CariVu™ Transilluminated Images

Using Near-infrared Transillumination technology, CariVu images support the identification of occlusal, recurrent, and interproximal caries and cracks. The system offers 99% accuracy<sup>3</sup>, and in some cases, offers an alternative to bitewing radiographs.<sup>4</sup>



### DEXcam™ 4 HD Intra-oral Camera Images

Used for diagnosis, education, and collaboration, the images from the DEXcam 4 HD are clear and highly detailed, and the camera is easy to use, reliable, and portable.



# DEXIS™

**DEXIS, LLC**

1910 North Penn Road, Hatfield, PA 19440

1-888-883-3947 • [www.dexis.com](http://www.dexis.com)

<sup>1</sup> For DEXcam, CariVu and DEXIS Platinum Sensor Indications for Use visit [www.dexis.com/ifu](http://www.dexis.com/ifu). <sup>2</sup> Data on file: DEXIS Sensor Competitive Performance Study and DEXIS Sensor Clinical Evaluation Report. <sup>3</sup> Kühnisch J. Benefits of the DIAGNOcam Procedure for the Detection and Diagnosis of Caries [study project]. Munich: Ludwig Maximilian University of Munich; 2013. <sup>4</sup> Söchtig, F, et al. Caries detection and diagnostics with near-infrared light transillumination: Clinical experiences. Quintessence Int. 2014;45:531-538.

## Focus on Results



# DEXcam™ 4 HD Intra-oral Video Camera

Pictures and video are worth a thousand words.



## Focus on Diagnostics.

For early detection and accurate representation of dental conditions, an intra-oral camera is essential to delivering optimum quality of care. DEXcam™ 4 HD yields remarkably clear and focused images in real-time that are crucial for diagnosis and for fully documenting your patients' overall oral health.

## Focus on Education.

Create immediate visual impact with high-definition images from DEXcam 4 HD. These highly detailed "show and tell" photos, which remain clear even when enlarged, can increase your patients' understanding of your clinical findings and support treatment recommendations.

## Focus on Collaboration.

Sharing a full range of images to partnering doctors can help patients gain the most benefit from multifaceted treatment. DEXIS makes it easy to share images with colleagues by offering a choice of formats that can be sent directly from the patient's record.

## Focus on Ease of Use.

The thoughtfully designed DEXcam 4 HD with its robust housing, automatic features, and convenient portability provides easy control over focus, image capture, and movement between operatories.

## Focus on Documentation.

DEXcam 4 HD helps you create and keep a clear history of improvement or decline of the patient's oral health over time for both dental and medical purposes. Create photo documentation of your findings for treatment in pre-determination claims to insurance carriers.

## Focus on Workflow.

DEXIS is well known for creating time-savings and efficiency in both its hardware and software that translates into less time interacting with your computer and more time interacting with patients. DEXcapture™ – companion software to DEXcam 4 HD, is an innovative and highly effective way to acquire and compare images. The software's guided and flexible workflow puts you in charge!



## Features and Benefits:

- › The DEXcam 4 HD intra-oral video camera feels solid and balanced in your hand. The anodized aluminum housing has a high-quality, professional aesthetic and adds a degree of durability.
- › The latest advanced 1.3-million-pixel CMOS sensor delivers high-resolution images that remain clear and crisp even when enlarged.
- › The precision 7-element glass optical lens produces exceptional image quality and helps prevent image distortion.
- › The camera has been optimized to help ensure images are displayed in natural color tones.
- › Capture buttons, which are on both sides to accommodate both right- and left-handers, are highly sensitive and easy to trigger. This aids in image clarity as camera movement is less likely.
- › A long depth of field allows you to move closer to or away from a tooth while the image remains in focus during your explanations of conditions and treatment.
- › The camera's tip houses intensely bright, state-of-the-art LEDs to yield well-illuminated, easy-to-see images even in the posterior regions.
- › 5-step focusing levels produced by a reactive motor-driven mechanism allow you to move easily between five field-of-view levels – from full face to magnified tooth.
- › A single press freezes the image; simply hold to save the image into the patient record.
- › The USB connection makes it a highly portable, plug-n-play camera. At the camera end of the cable, a reliable, industrial-grade connector offers quick-disconnect/reconnect functionality.

## Introducing DEXcapture:

*The software's guided and flexible workflow puts you in charge!*



- › Not just limited to radiographs, clinicians can now capture images in a series. Choose from 3 basic series or create a custom series for intra-oral camera images, and take advantage of DEXcapture's guided workflow. When using each series, once an image is captured, the software automatically moves to the next tooth position.
- › DEXcapture's ability to number images in two separate streamlined methods provides the ultimate flexible workflow per procedure: Pre-select a tooth number before capture, or acquire all images, and then select tooth numbers via drag-and-drop.
- › While using DEXcapture, you are able to compare newly captured images side-by-side with existing X-rays, CariVu images, and photos.